

Department of Registration and Stamps

Government of Maharashtra



# MANTRA MFS 110

DRIVERS AND RD SERVICE INSTALLATION

## *User Guide*





## Contents

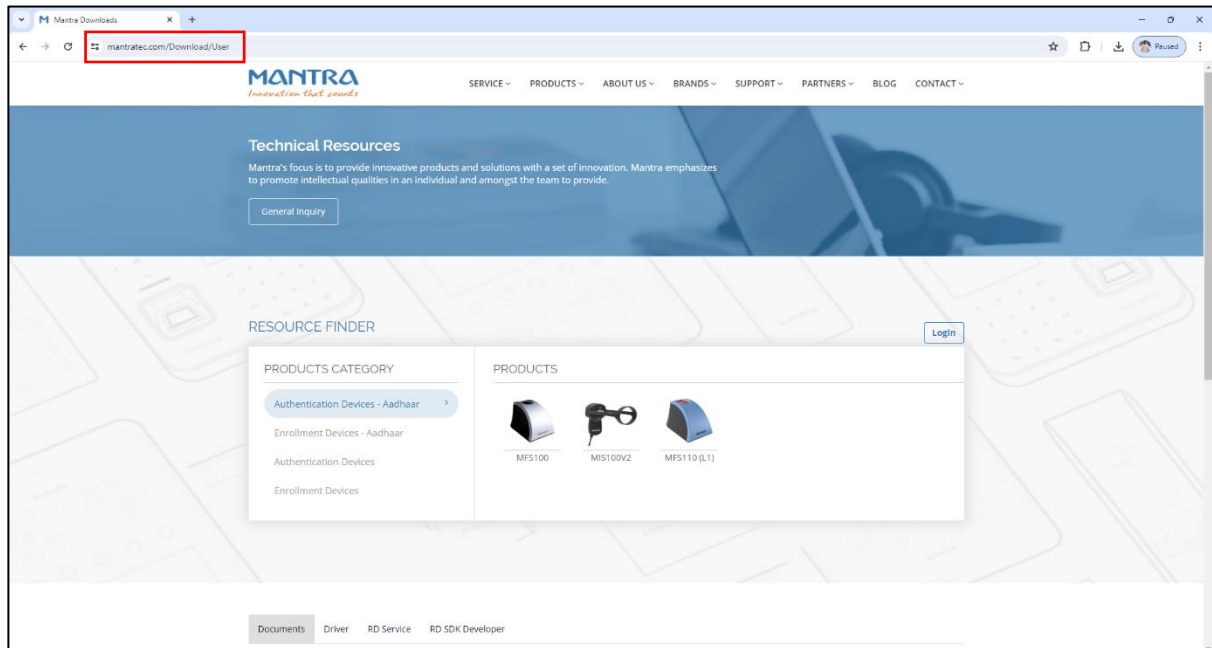
1.0 Mantra MFS 110 Drivers Download .....	3
2.0 Install the drivers.....	4
3.0 Mantra MFS 110 RD Service.....	5
4.0 Installation Process- RD Service .....	6
5.0 Accessibility.....	8



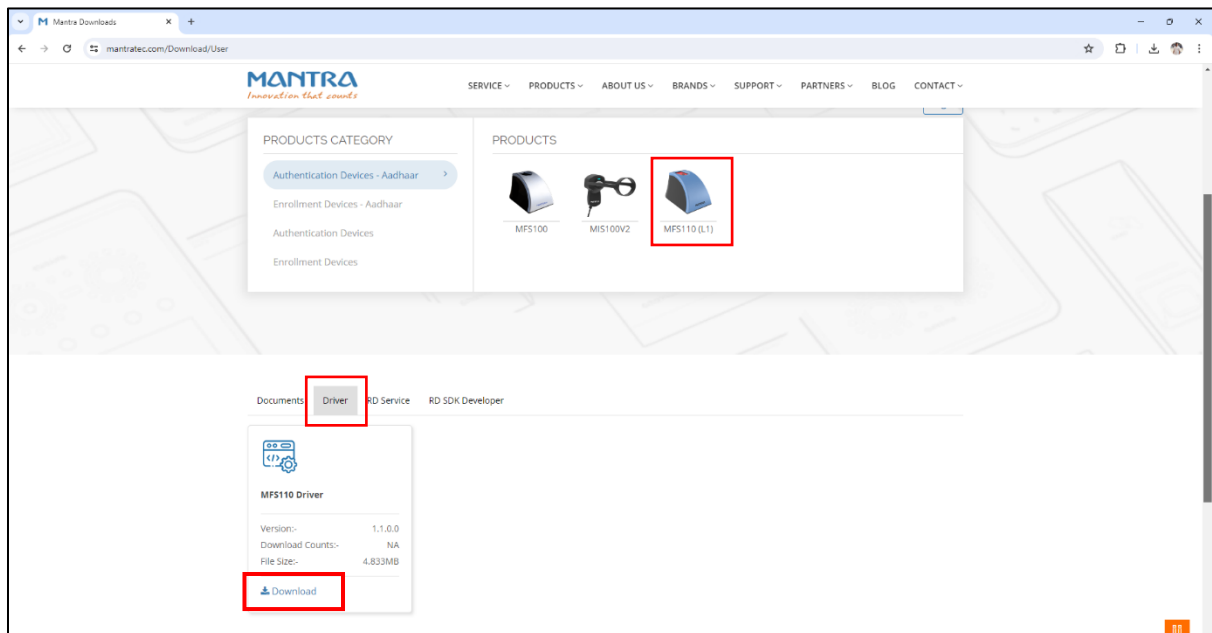
Mantra MFS 110 device is a biometric device that captures the thumb image. The user needs to install the Drivers and RD Service in their system. The installation process is illustrated in this document.

### 1.0 Mantra MFS 110 Drivers Download

The user needs to go to the website <https://www.mantratec.com/Download/User>



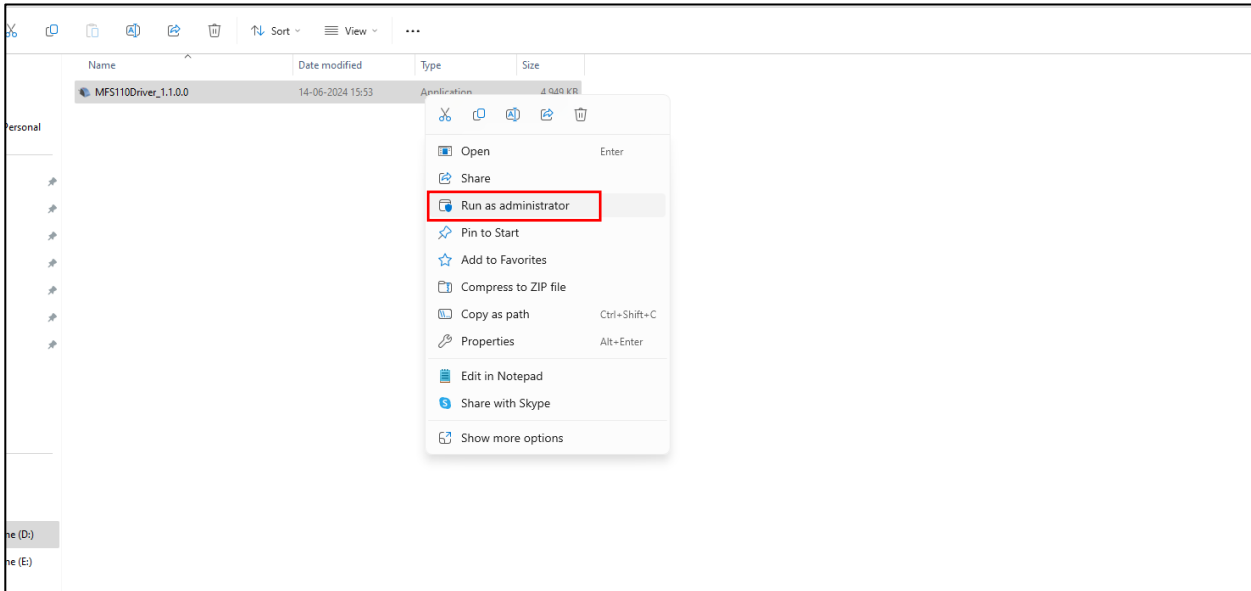
Here we see the list of products. Select MFS 110 and then select the drivers option to download the drivers.



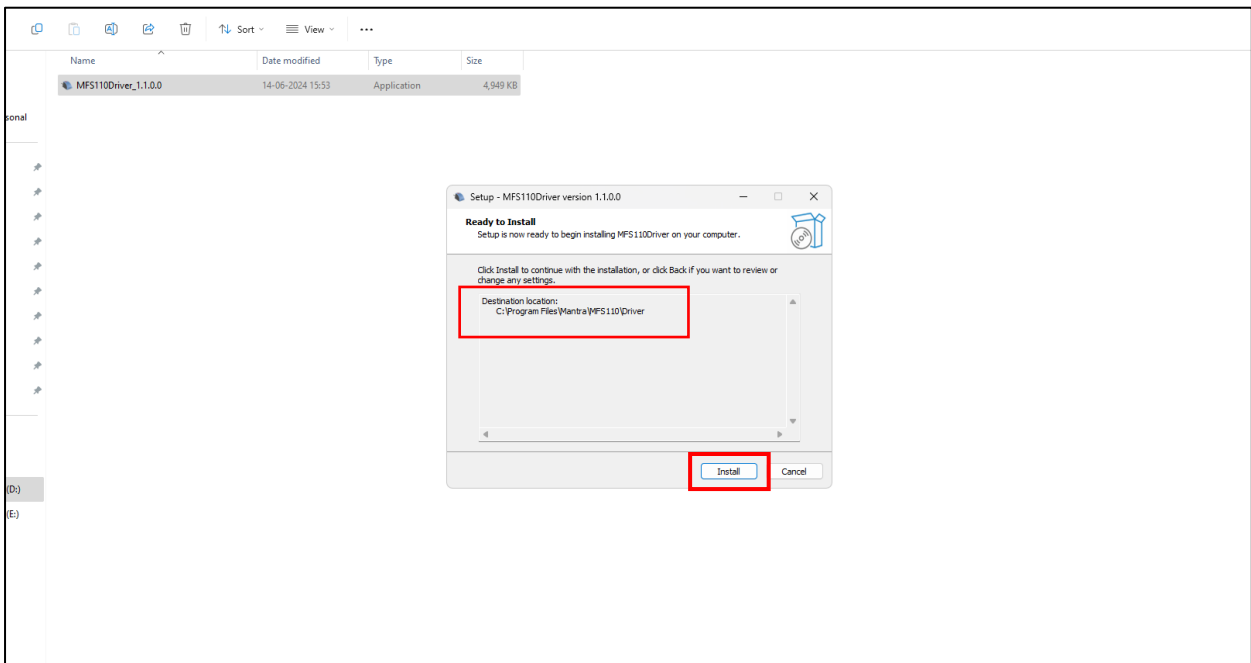


## 2.0 Install the drivers

Now we need to install the drivers. So go to the destination where the set-up file is downloaded. Right-click on the setup file and select ‘Run as administrator.’

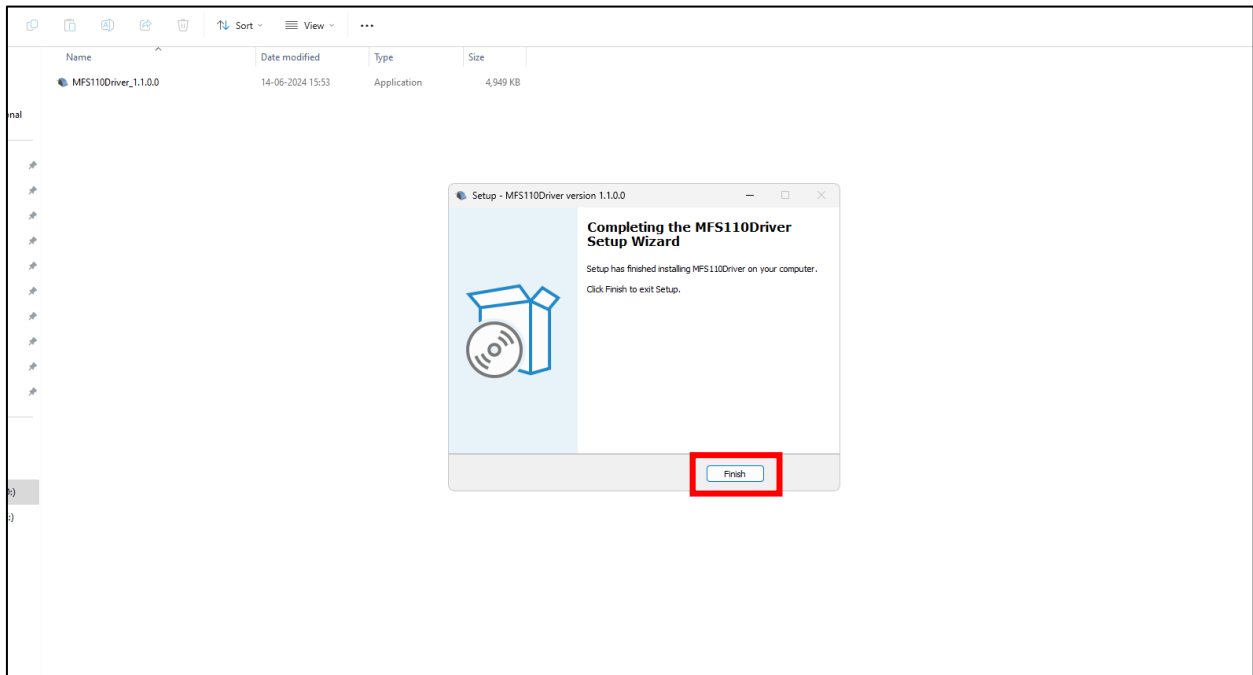


A tab will open indicating the destination location. Click the ‘Install’ button to proceed further.



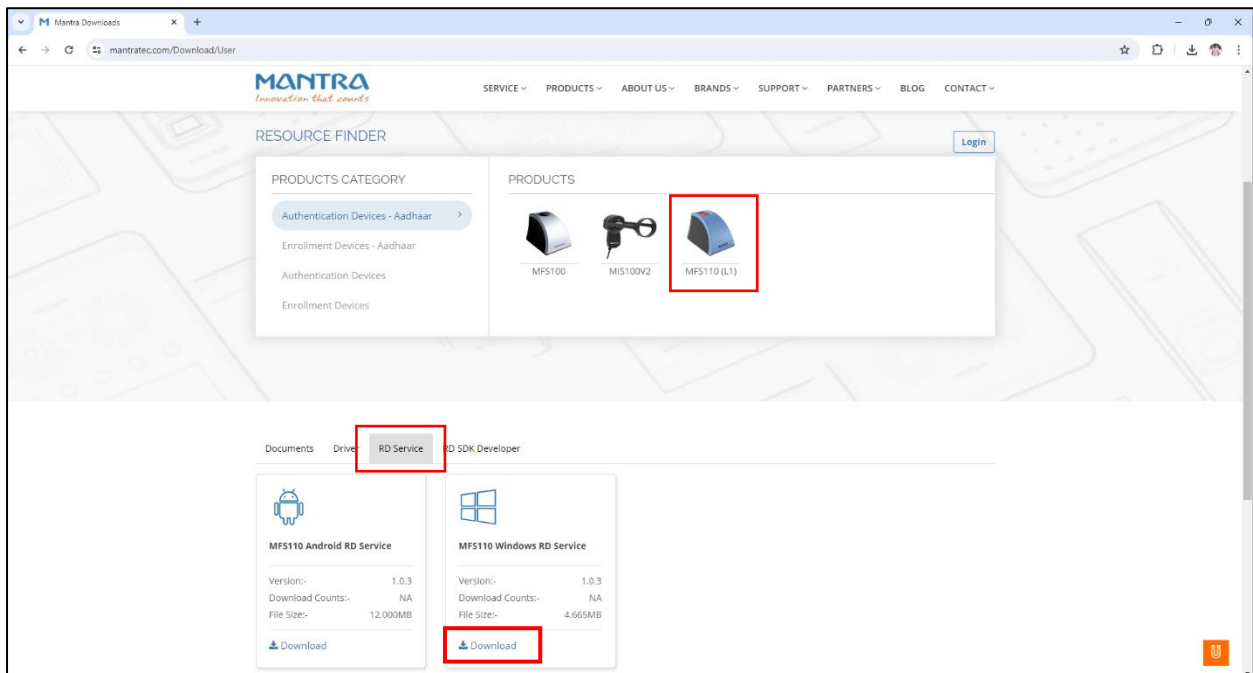


Now once the installation is complete, click the 'Finish' button.



### 3.0 Mantra MFS 110 RD Service

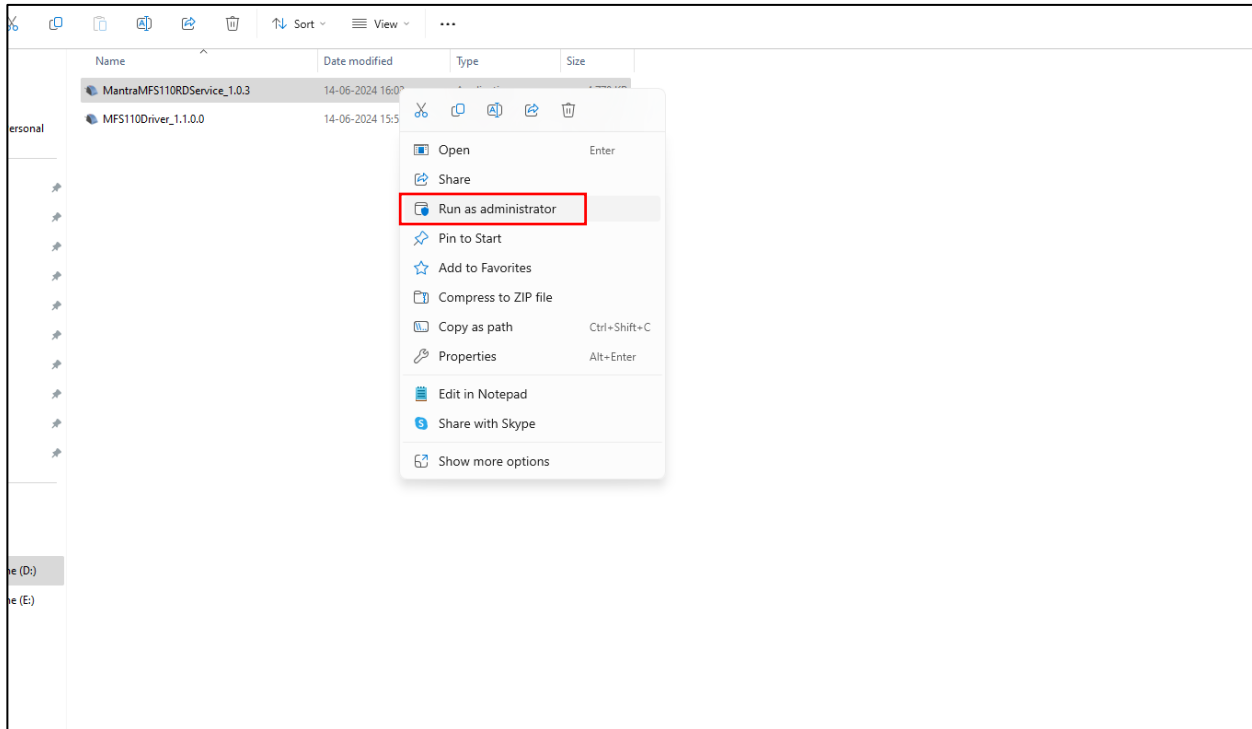
As seen earlier when the product is selected, the RD Service option is located beside Drivers. Select the MFS 110 Windows RD Services. For the users using Android, the RD Service for it is also available.



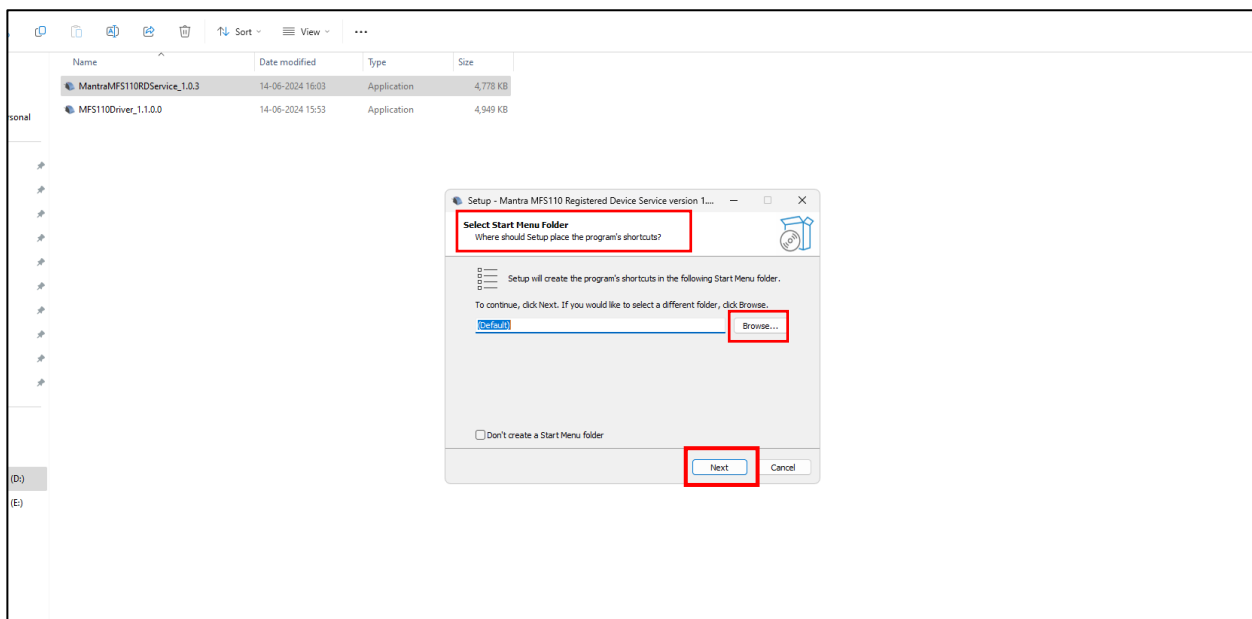


### 4.0 Installation Process- RD Service

Now we need to install the RD Service. So go to the destination where the set-up file is downloaded. Right-click on the setup file and select ‘Run as administrator.’

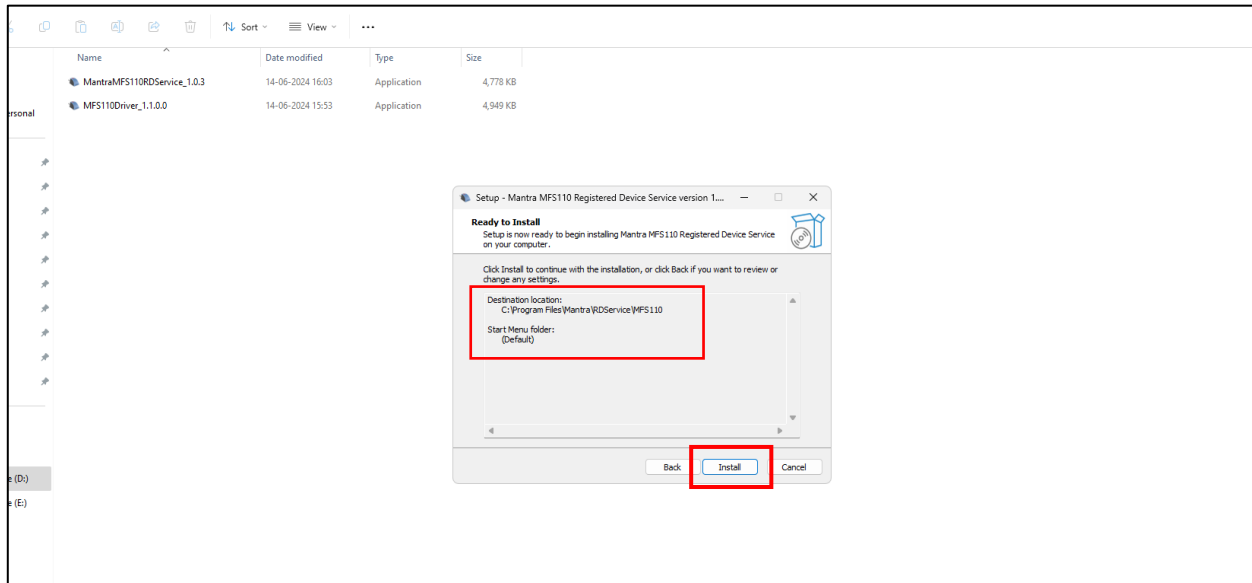


Now the user is asked to select the ‘Start Menu Folder.’ Once selected, click the ‘Next’ button.

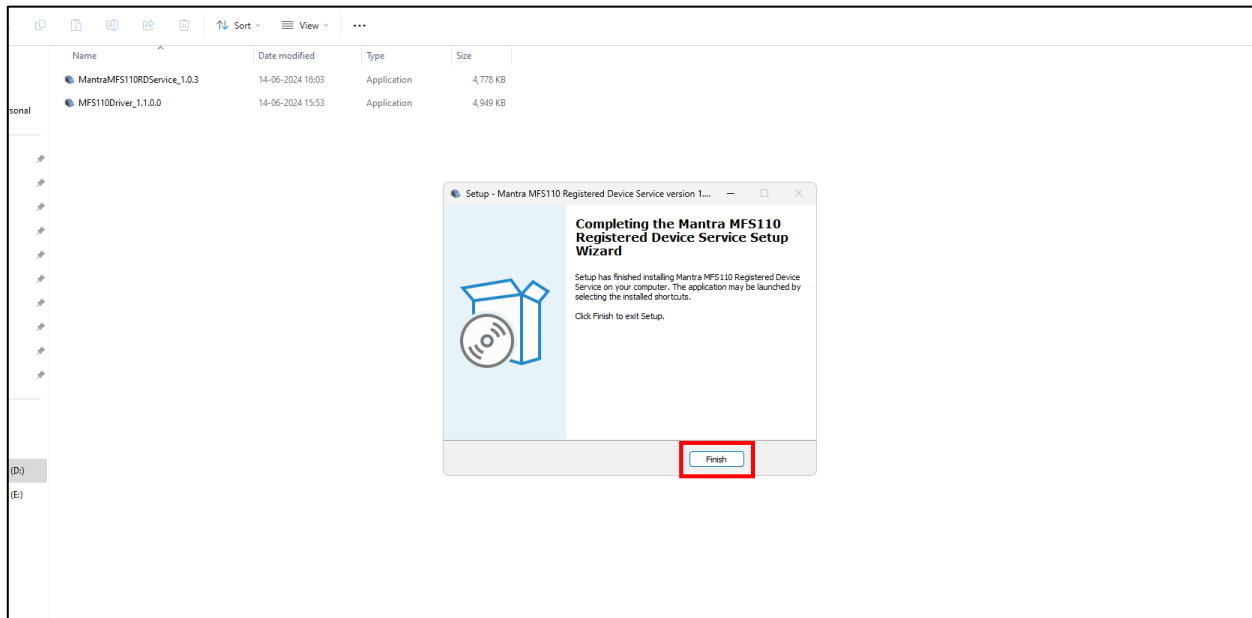




A tab will open indicating the destination location. Click the 'Install' button to proceed further.

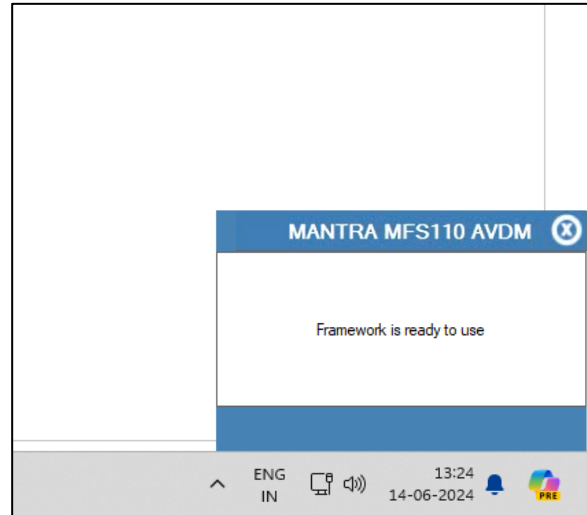
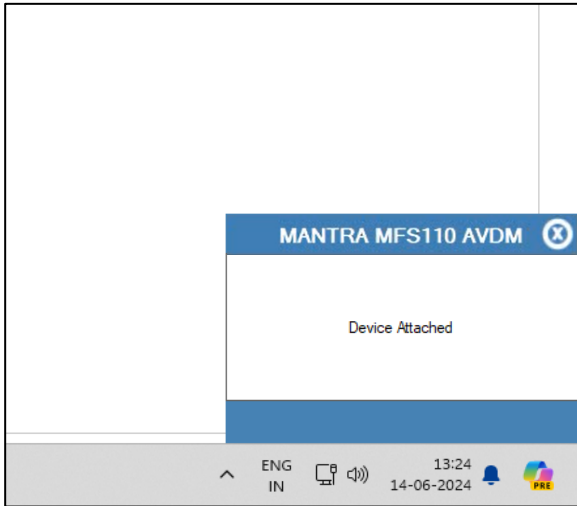


Now once the installation is complete, click the 'Finish' button.





After installation of RD Service, when the Mantra device is attached to the system, a pop-up will appear stating that the device is attached and the framework is ready to use.



### 5.0 Accessibility

The RD Service may be accessed under Services from "Control Panel\All Control Panel Items\Administrative Tools" once it has been installed.

